

## EXHIBIT 4

### FRONT YARD LANDSCAPING REQUIREMENTS

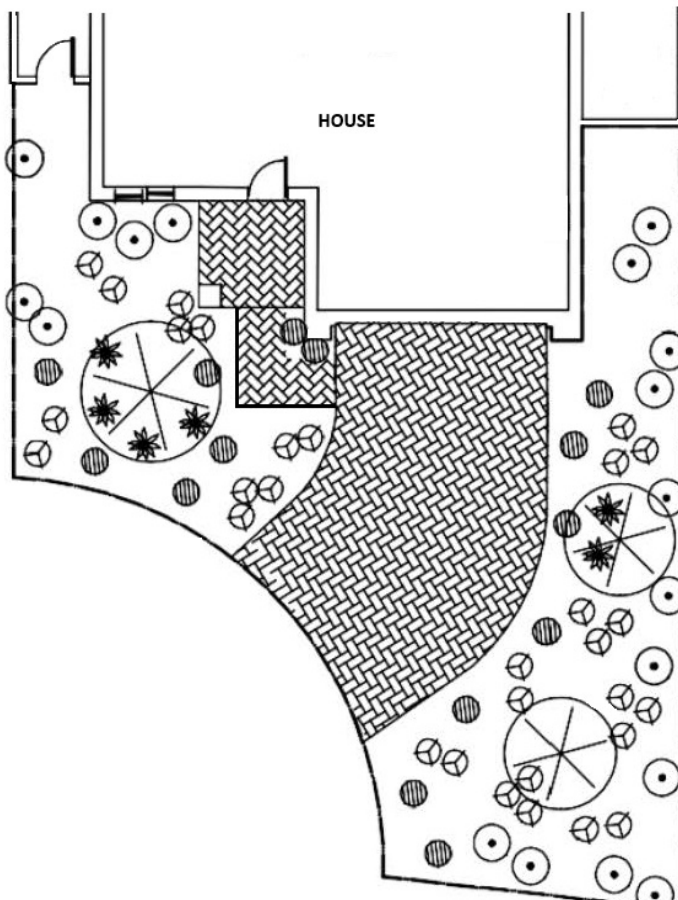
A **front yard** is the area between the front property line and the face of the building walls and return walls exposed to the street, including porte-cocheres, but excluding porches and courtyards with walls. At a minimum, front yards must have a combination of trees, shrubs/plants and ground cover/rock materials at the ground plane. Refer to the design guidelines for additional requirements and for information on corner lots and parkway landscape.

The **minimum requirements for Front Yards** (with frontages over 55 feet) are:

- 2 large trees\* (24" box size/min. 6' tall),
- 40% shrub/plant coverage\*\* (in-ground), and
- Decorative rock material+ (3/8" min. size; earth-tone colors) to cover the ground-plane at a minimum 2" depth.

\* Palm trees may be considered – see guidelines for information. \*\*Tree canopies do not count toward the minimum shrub/plant coverage requirement. +White-color rock is prohibited.

Example of a front yard landscape installation and a plant material coverage calculation.  
Site conditions may vary.



Example - Total Front Yard Softscape – 1230.00 sf

<u>Plant Type</u>	<u>Size (in gallons)</u>	<u># used</u>	<u>SF in coverage</u>
⊙ Lg. Shrubs	5 gal	1.5 per	100.00 sf
⊕ Med. Shrubs	5 gal	2.5 per	100.00 sf
* Accents	5 gal	.5 per	100.00 sf
⊗ Ground Cover Plants	5 gal	1 per	100.00 sf
68 Plants Total			

<u>Tree Type</u>	<u>Tree Size</u>	<u># Used</u>
⊙ Large	24" Box	2
⊕ Ex. Large	48" box	1